



PROPOSAL FOR STARKWEATHER CHLORIDE PROJECT

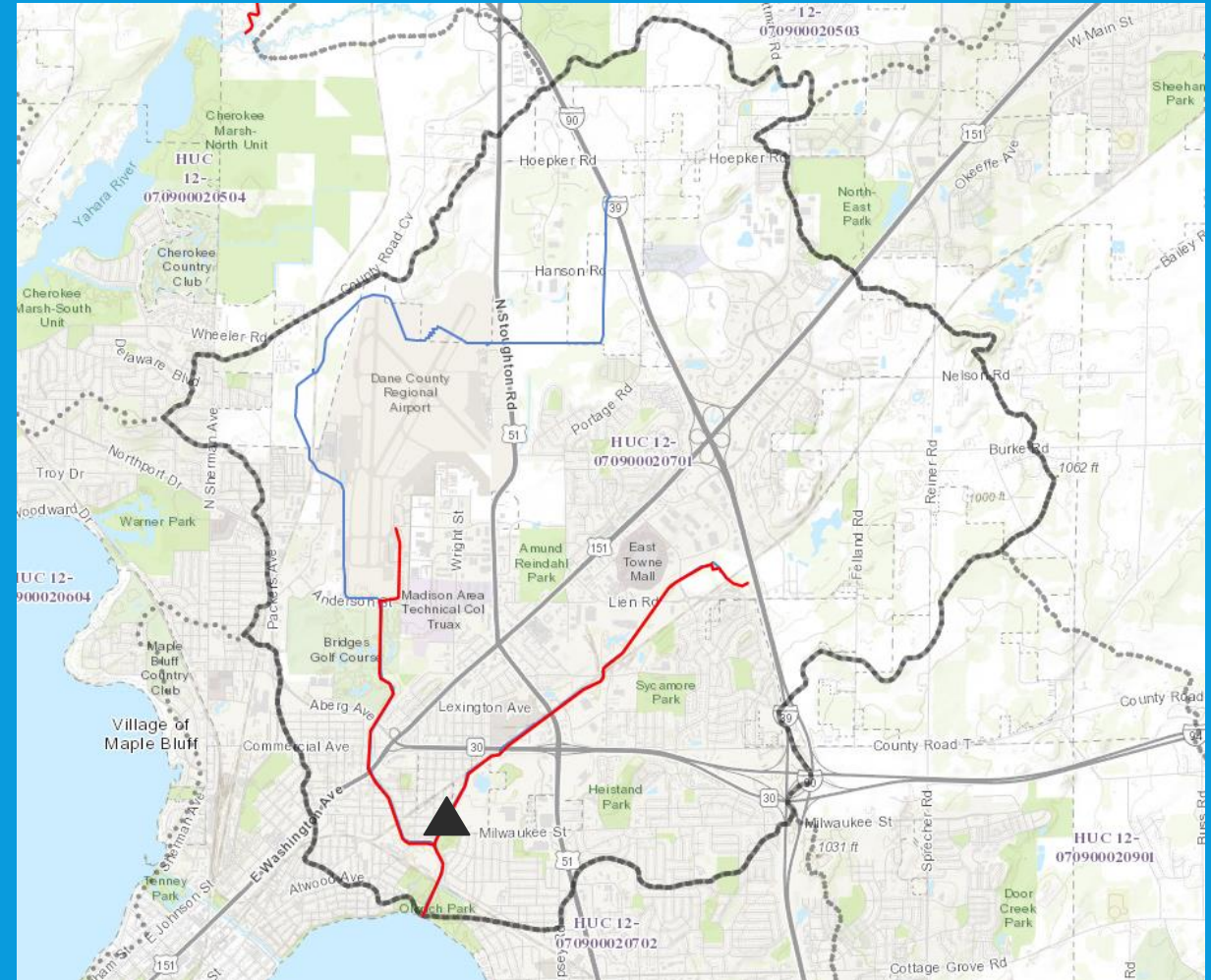
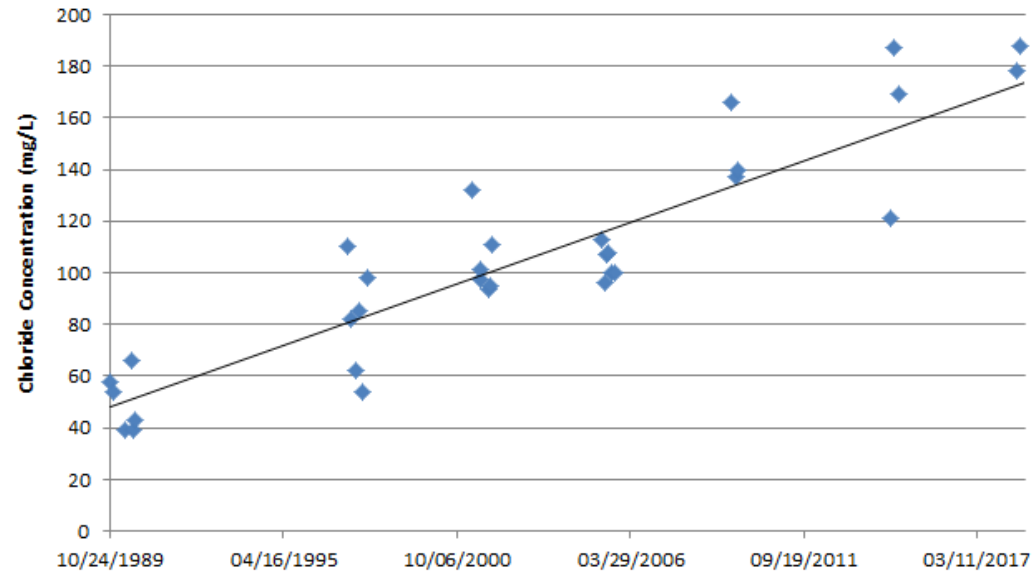
September 24, 2019

Capital Area

Regional Planning Commission

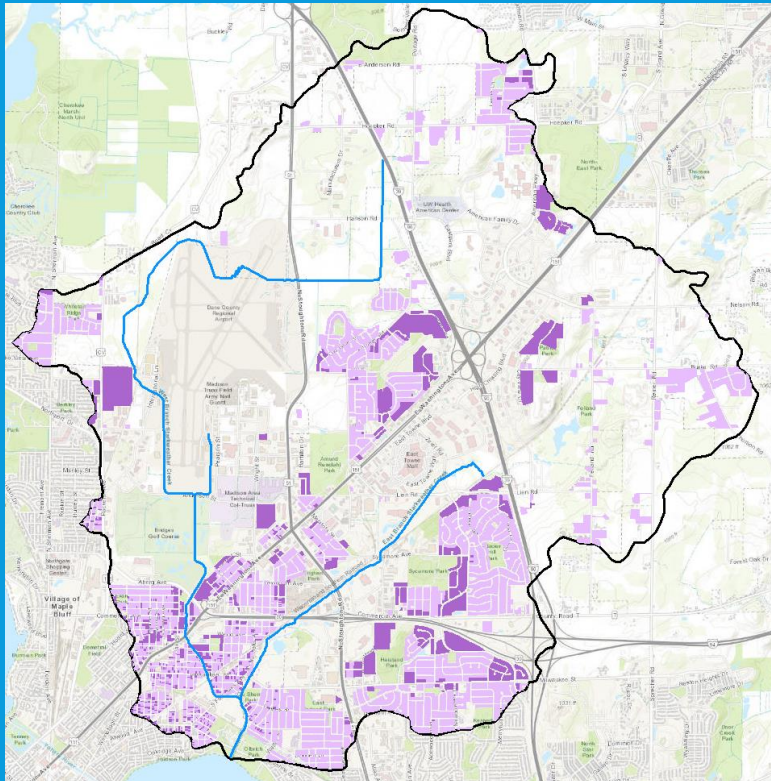
INCREASING CHLORIDE CONCENTRATIONS

Chloride Concentration at USGS East Branch
Starkweather Creek

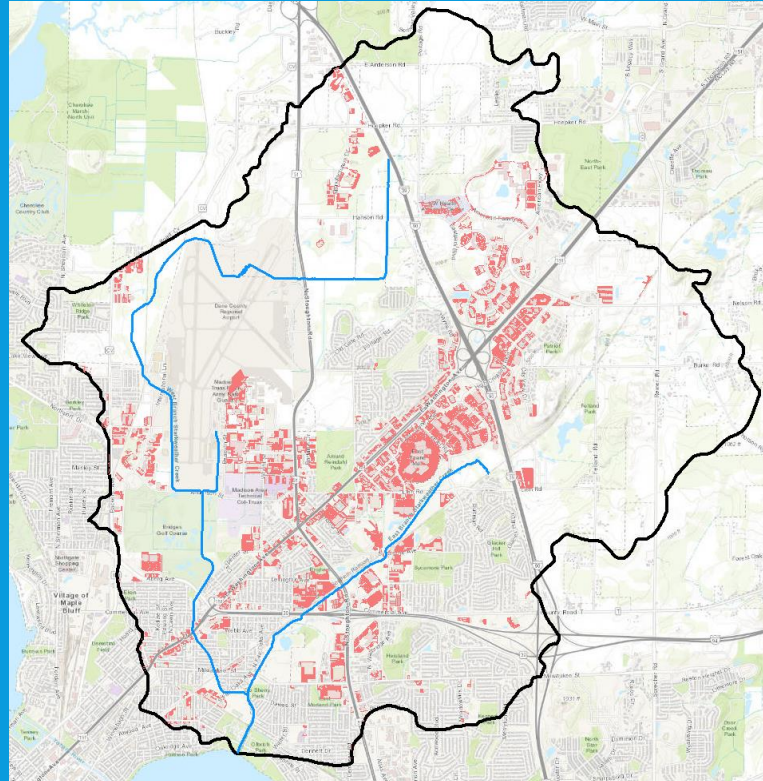


WHERE IS SALT COMING FROM?

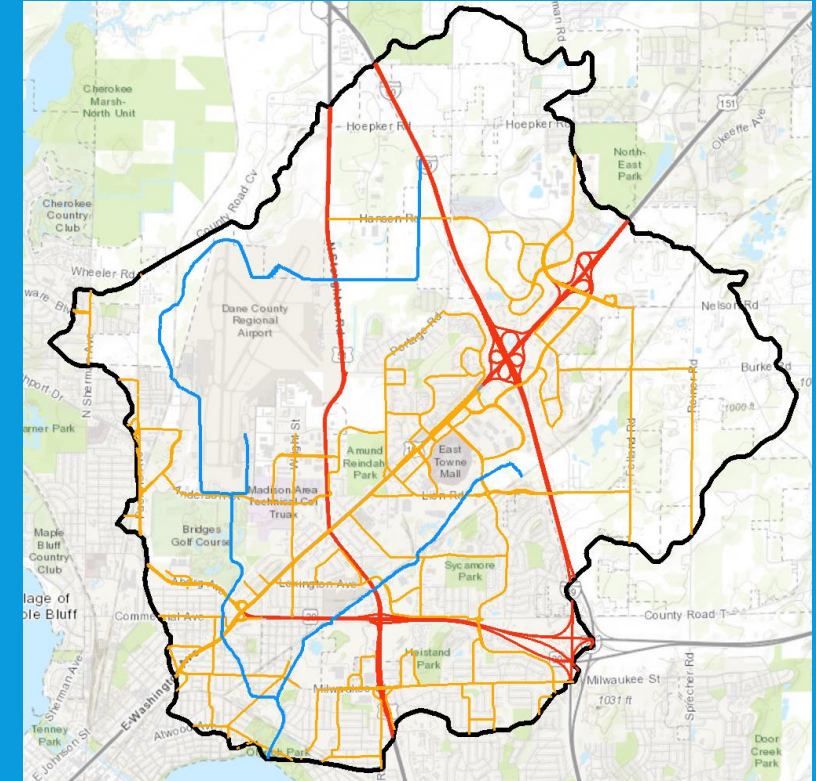
Residential –
Single family Multifamily



Parking Lots



Roads – **City of Madison**
Dane County Highway Department



STARKWEATHER WATERSHED CHLORIDE MANAGEMENT PLAN

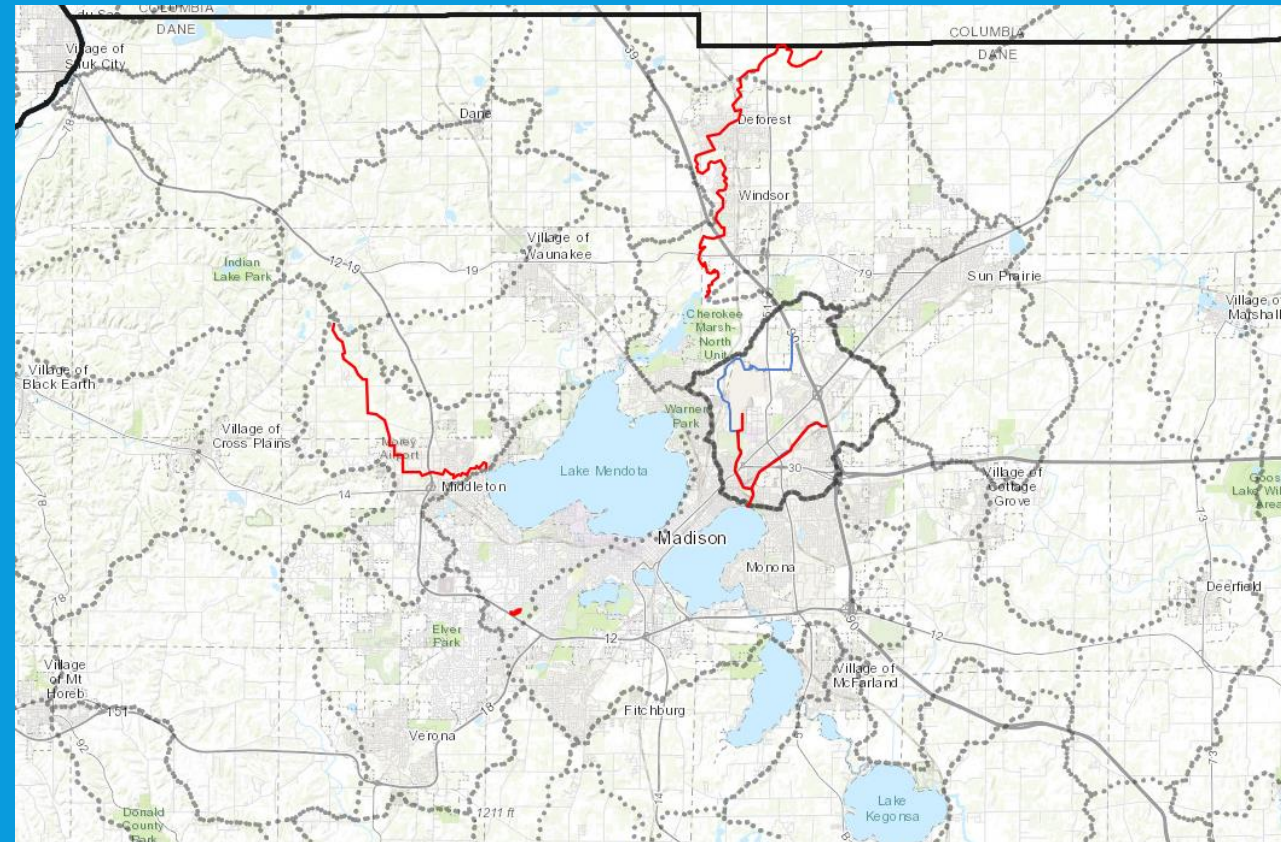
Goal: Targeted implementation of Salt Wise best practices in the Starkweather Creek watershed

- Survey current practices
- Quantify sources
- Targeted implementation of BMPs
- Monitor progress
- Adapt plan

CHLORIDE MANAGEMENT PLAN BENEFITS

Benefits to broader region:

- Provide opportunities for pilot projects
- Consistent data collection, recordkeeping
- Quantify benefits of Salt Wise BMP implementation
- Apply findings and approach elsewhere



TIMELINE

2019 - Develop Project

- Identify and engage project partners
- Outline planning process
- Apply for River Planning grant

2020 - Write Chloride Management Plan

- Watershed assessment
- Conduct baseline monitoring
- Survey of watershed salt use

2021-2022 - Implement Plan

- Increase use of BMPs
- Conduct outreach efforts
- Continue monitoring
- Conduct follow up salt use surveys

2023 - Assess progress and adapt plan

- Identify successes
- Make appropriate adaptations
- Share with others
- Apply findings elsewhere in the region

FALL 2019

2019 - Develop Project

- Identify and engage project partners
- Outline planning process
- Apply for River Planning grant

SALT WISE PARTNERS

- **Major Partners**
 - City of Madison
 - MMSD
 - Public Health Madison & Dane County
 - Dane County Land and Water Resources Department
- **Supporting Partners**
 - Madison Water Utility
 - City of Fitchburg
 - DOT
 - DNR
 - UW Madison

THOUGHTS?

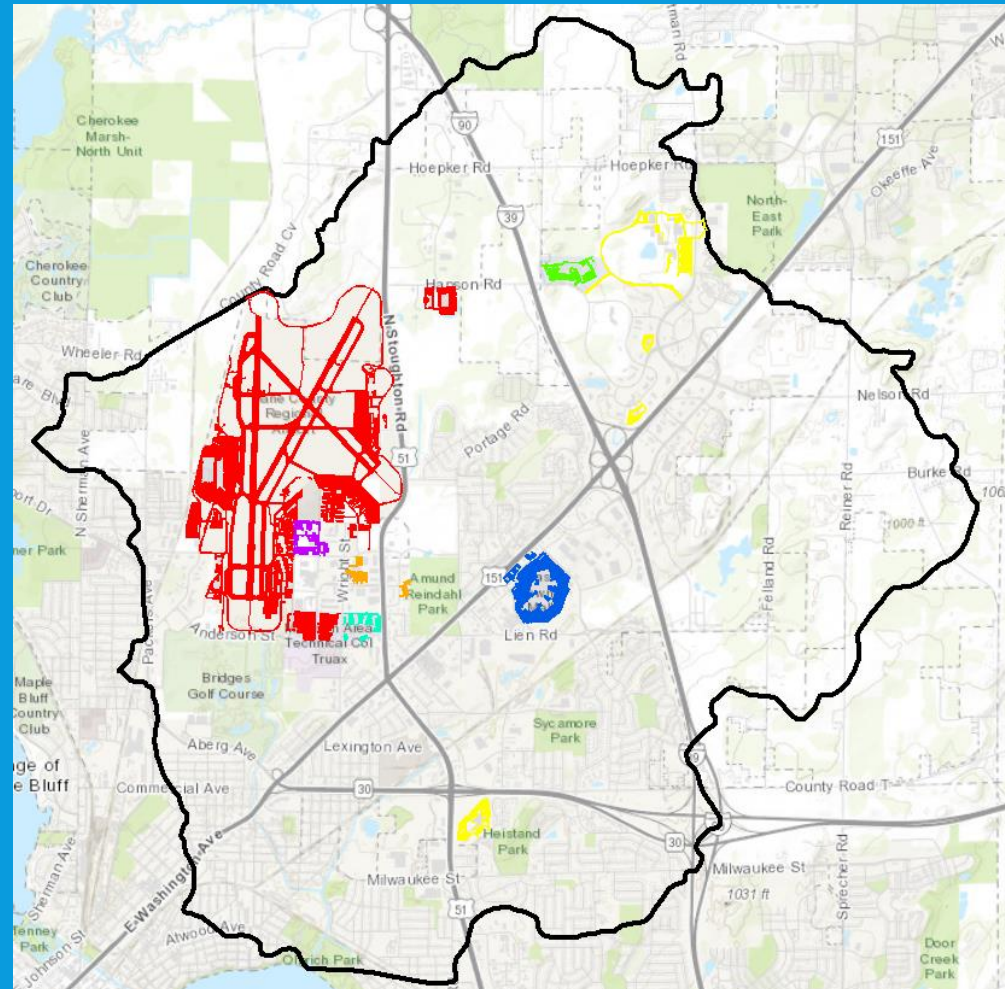
- Would your organization partner on developing and implementing a chloride management plan for the Starkweather Creek watershed?
- Who are other key partners to involve in the effort?

NEXT STEPS

- Meet individually with project partners
- Seek letters of support
- Meet with DNR
- Apply for River Planning grant

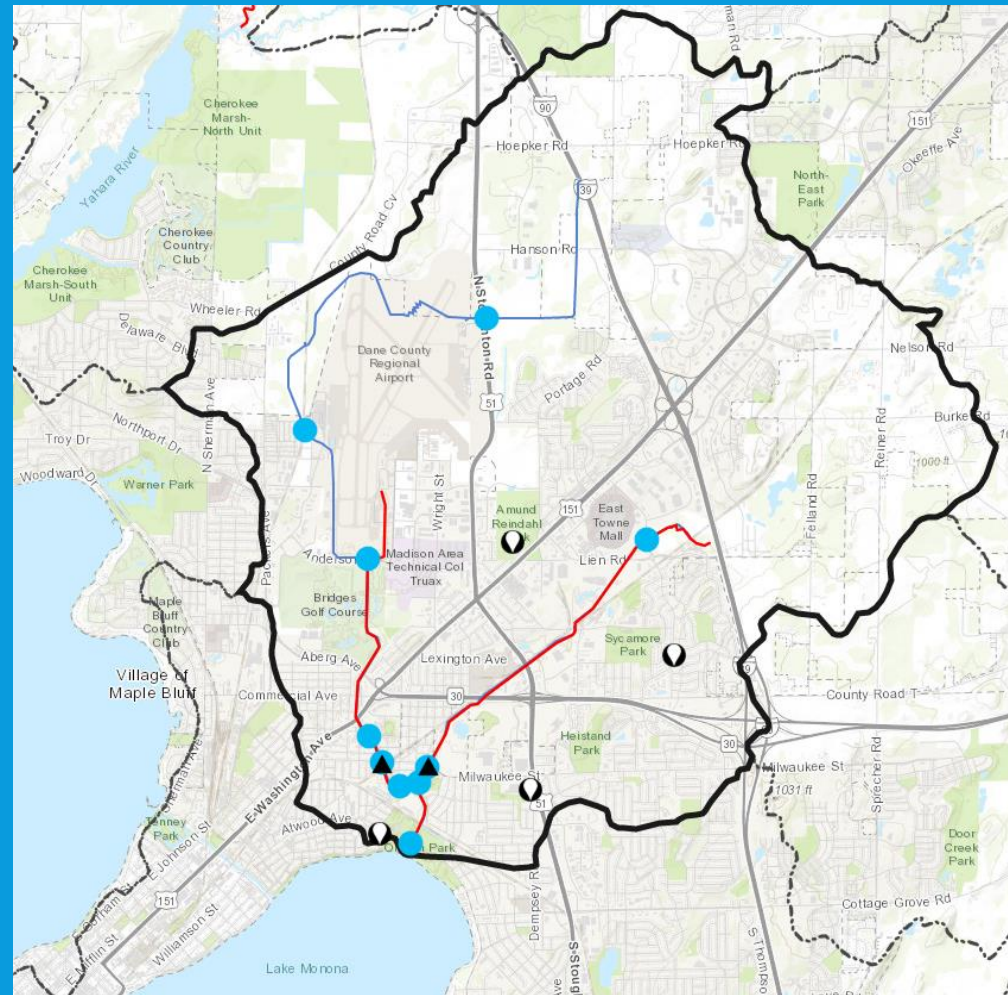


IMPORTANT LANDOWNERS IN THE WATERSHED



- Airport
- American Family Insurance
- UW-Hospital
- East Towne Mall
- DOT
- MATC
- Army Corps of Engineers

OTHER WATER QUALITY MONITORING



USGS Monitoring



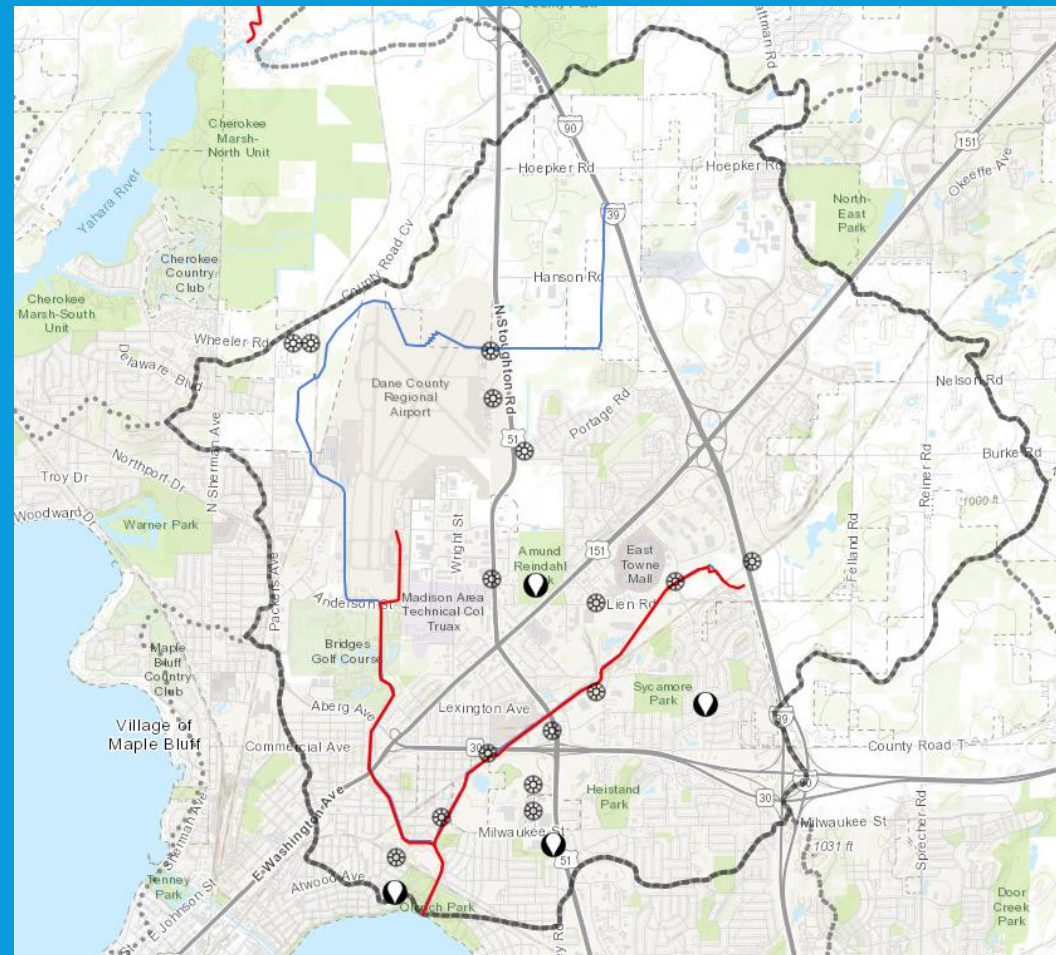
Public Health Monitoring



Groundwater



POTENTIAL MONITORING



MMSD Manholes



Groundwater



Chloride Impaired Rivers and Streams



STORM SEWER MONITORING

