

# City of Stevens Point Snow Plan 2020-2021



# Table of Contents

Snow Policy .....	2
Snow Procedures .....	3
Emergency Parking Restrictions & Reminders .....	4
Personnel Call-In Process .....	5
Plowing Agreements with Town of Hull .....	6
Route Maps.....	7
<i>Salt Routes</i> .....	8
<i>Plow Routes</i> .....	9
<i>Sand Routes</i> .....	10
<i>Brine Route</i> .....	11
<i>Sidewalk Plowing</i> .....	12,13
<i>Snow Picking</i> .....	14-16
<i>Parking Lots Plowed</i> .....	17



## City of Stevens Point Snow Policy

Snow plowing will commence when, in the opinion of the Public Works Department, sufficient snow or ice exists to be a hazard to traffic. Several factors are considered when deciding when to plow, such as the amount and density of snow, wind speeds, drifting, pavement temperature, duration of the storm, time the storm starts and ends, the amount of time our drivers have been plowing and peak traffic times.

City-wide plowing operations will commence at or near the end of a snow fall totaling 2 inches or more in a single event. When the total snow fall is less than 2 inches only salt routes will be plowed. Residential streets (sand routes) are not typically plowed for snow events totaling less than 2 inches. In addition, residential streets (sand routes) are not normally salted. These policies are intended to minimize the expenditure of tax dollars and reduce environmental impacts. Attention is given to City streets according to the designated priorities as follows:

**Priority 1** – Salt Routes: Primary streets (arterials and collectors) and higher volume local roads

**Priority 2** – Sand Routes: Low-volume residential streets (locals) and sidewalks

**Priority 3** – Municipal Parking Lots

Salt routes are always maintained first, sand routes are considered secondary and will only be plowed after salt routes are cleared.

When larger heavy snowstorms are occurring during peak travel times, salt routes will be continuously plowed throughout the storm. Sand routes are typically not plowed until the storm ends. When the street department does an entire city plow, the operation is generally performed at night between the hours of 11:00 pm and 7:00 am to minimize potential interference and conflicts with the traveling public and parked cars.

It is the City's desire to have streets plowed as soon as possible so that the public can get back to routine activities. Two major factors that are beyond the City's control are 1) the overall length of the storm event and 2) the time of the day when the storm actually ends. These two facts dictate when City-wide plowing operations will begin and to a great extent determine when plowing operations will be completed.

Plows typically make two to four passes down a street to clear it curb to curb. The reason for plowing the snow back to the curb is to maintain the road width, expose catch basins, and keep roads safe for motorists and pedestrians where no sidewalks exist. [It is best for the public to wait to shovel out driveway approaches, if possible, until after the City has finished plowing. This will minimize the amount of snow that collects in the approach.]

## Snow Procedures

The City is responsible for maintaining approximately 160 miles of streets; 72 miles are salt routes and 94 miles are sand routes. There are four A routes, four B routes, ten C routes, and one alley route. Maps of all of the routes begin on page 8.

Salt routes are the priority in any snowfall. There are three pieces of equipment per salt route. On a two-pass system (down and back), the street is completely cleared, versus a single truck having to make three to five passes. It takes approximately three hours to complete the salt routes.

Sand routes utilize one truck for each of the four routes. Normal hours for sanding are 11:00 p.m. to 7:00 a.m. on weekdays. On the night of a snowfall, routes are sanded after the plow routes are done. The hours for sanding allow intersections to be sanded before traffic picks up.

After plowing has been completed and during non-business hours (7:00 a.m. – 3:00 p.m.), the police department determines when the roads have become hazardous due to snow, rain etc. At this point, they would call in two street department personnel to take care of the problem areas. If more than four people are needed to handle the situation, management is called and the entire sanding/salting/plowing crews are called in.

City snow equipment includes:

- 12 Plow trucks (1 is a spare)

- 1 Alley truck

- 1 Brine spraying truck

- 2 Graders

- 1 Loader for parking lots

- 2 Loaders with mounted blowers (One has a snow picking route alone with a grader and three quad-axels. The other is used to stack at dumpsites.)

- 1 Skid steer with a front end broom, blower, or blade to clear sidewalks

## Snow Emergency Parking Restrictions

Whenever the Mayor shall, by reason of heavy snowstorm or blizzard, proclaim a snow emergency pursuant to section 66.325 of the Wisconsin Statutes, no person shall park, stop, or leave standing any vehicle upon the streets or any portions of the streets during the hours set forth in said proclamation.

### Reminders

- The City has an ordinance on blowing, plowing, or shoveling snow into the streets. If caught, the person(s) could be fined.
- Parking on the street during and after two inches or more of snow is costly and time consuming when having to go back and plow again.
- Marking non-curb areas with a bright colored stick or flag approximately 3-5 feet from the edge of the pavement will prevent damage to yards.

### Mailbox Policy

Unfortunately, mailboxes may occasionally be damaged during snow and ice control operations as well as other City maintenance and repair operations. If a mailbox is damaged, the owner should report the damage to the Streets Department at 715-346-1537. The Streets Department will dispatch an employee to inspect the damage and determine if the damage is due to direct contact with a piece of equipment.

If the damage is determined to have resulted from direct contact with a piece of City owned equipment (such as being struck by the plow blade or backed into by a truck, etc.) the City will repair or replace the damaged post or box up to a maximum cost of \$100. If the owner can demonstrate the value of the mailbox is more than \$100 or requests repair or replacement in excess of \$100, the owner may make a damage claim at the office of the City Clerk for a check in the amount of \$100 towards the repair or replacement. Any owner making a claim shall assume full responsibility for the repair or replacement including all materials and labor.

The City will not repair or replace a mailbox or post that is damaged as a result of being struck by snow. It is not uncommon for plastic boxes to come off their mount when snow is thrown against them or for mailboxes to be removed from their posts due to rusted fasteners or posts to break due to rust or decay.

### Items in Right of Way

No items may be placed in the Right-of Way without written permission from the Director of Public Works. Damage to items in the Right-of-Way, permitted or not, are the responsibility of the property owner.

## Call-Time Procedures

- If only salting/sanding of specific areas is required, the one or two call-time personnel for that week will handle this.
- When all A and B routes need to be completed, without plowing or scraping, four personnel are required. The first personnel called in can call two or three other, depending on the situation. Personnel called in will be from the seniority list.
- If it is felt that plowing or scraping of the A and B routes is required, an attempt to call management should be made. Additional personnel will then be called in. (If no management can be reached, the appropriate number of personnel can be called in.)
- Every attempt will be made to utilize twelve personnel if the A and B routes must be plowed. There will be four crews of three.
- Equipment is assigned to specific routes. The crew you are on will be determined by what piece of equipment you have. Every effort should be made for personnel to use their assigned snow removal equipment if applicable and possible.

## Snow Plowing Agreements

The City of Stevens Point and the Town of Hull have the following plowing agreements.

Town of Hull will plow:

- Dubai Avenue from Second Street North to the West
- Johnson Drive from Second Street North to Dubai Avenue
- East Maria Drive from Virginia Drive to Highway 51 bypass
- Pine Bluff Road
- North Point Drive from Brilowski Road to the West end
- Brilowski Road from North Point Drive South to Walter Street
- Brilowski Road from Rainbow Drive North to the first curve
- Norway Pine Drive
- Old Highway 18 from Highway 10 East to the City limits
- Old Highway 18 from Brilowski Road West to the City limits
- Oxbow Road
- Hofmeister Drive
- North Reserve Drive to Dubai Avenue

Stevens Point will plow:

- North Point Drive from Old Wausau Road East to Highway 66
- Harmony Lane
- Indiana Avenue from Regent Street to Highway 66
- Weir Boulevard
- Country Club Drive
- East Maria Drive to Green Avenue
- Birch Street
- Wood Lane
- Old Wausau Road from City limits to North Point Drive
- Dubai Avenue from North Second Drive to North Reserve Street
- Torun Road from Highway 66 to Wojcik Memorial Drive (Salt Route)

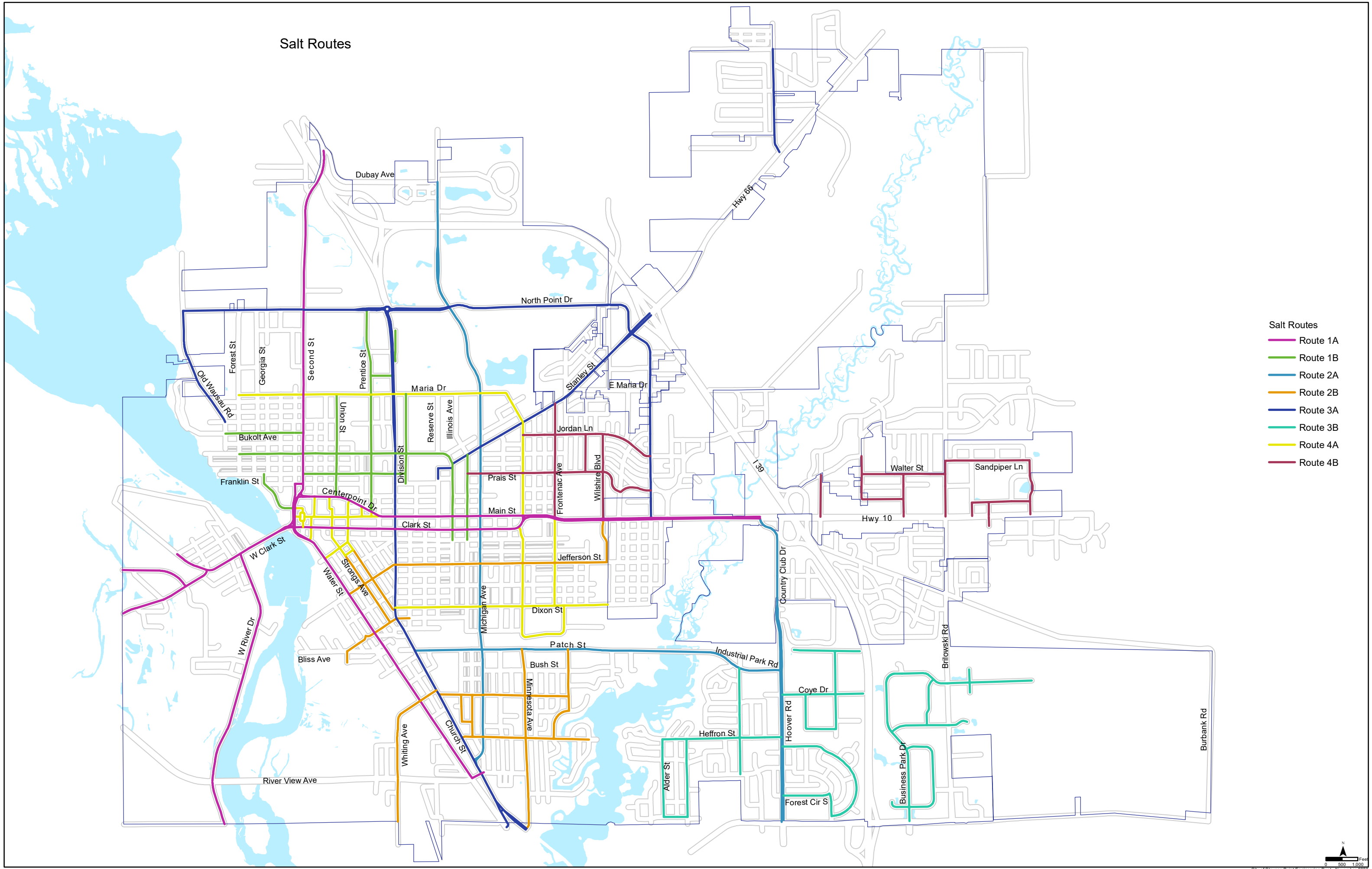
# Route Maps

- Salt Routes*..... 8
- Plow Routes*..... 9
- Sand Routes*..... 10
- Brine Route*..... 11
- Sidewalk Plowing*..... 12,13
- Snow Picking*..... 14-16
- Parking Lots Plowed* ..... 17

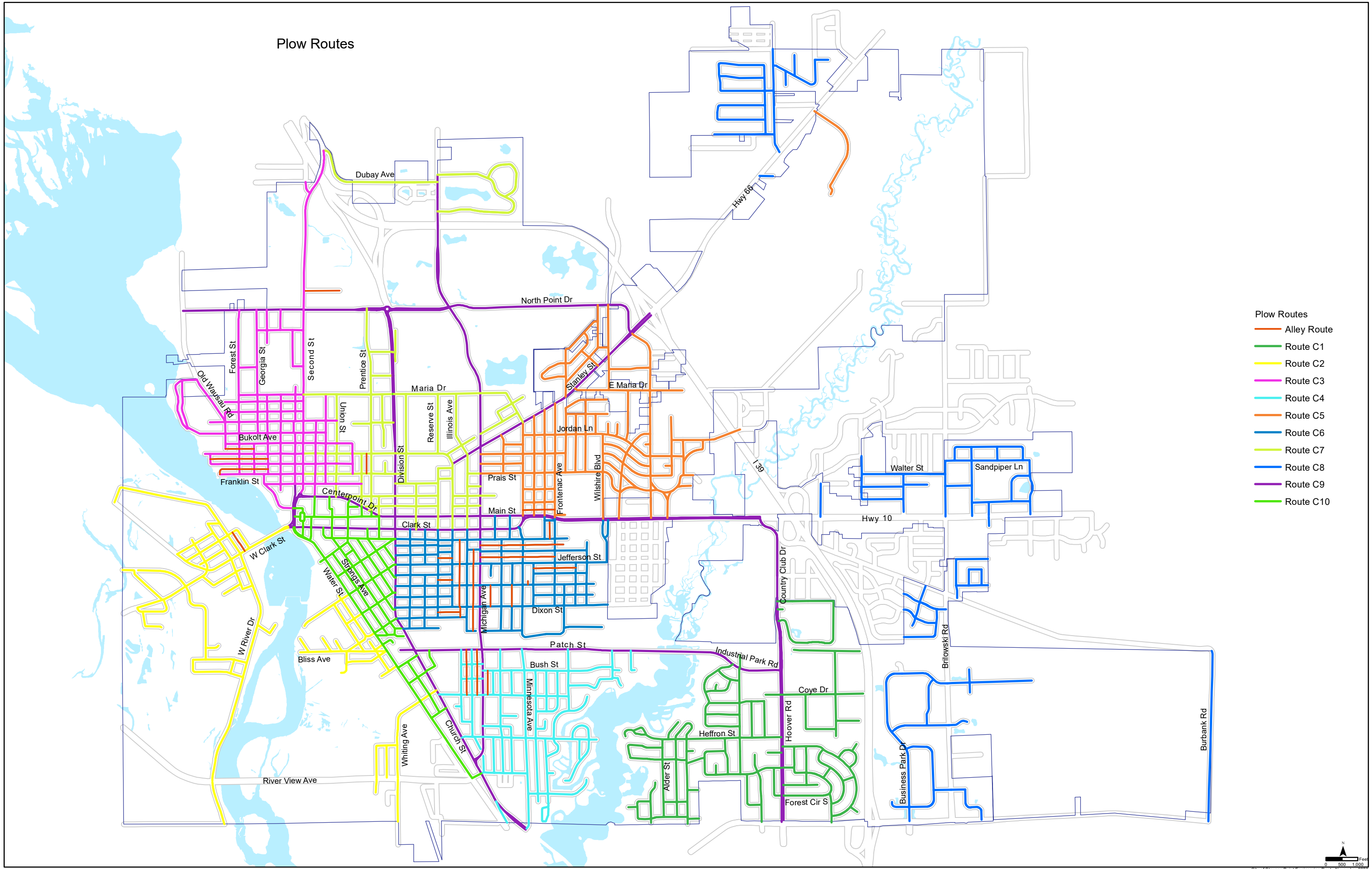


# Salt Routes

- Salt Routes
- Route 1A
  - Route 1B
  - Route 2A
  - Route 2B
  - Route 3A
  - Route 3B
  - Route 4A
  - Route 4B



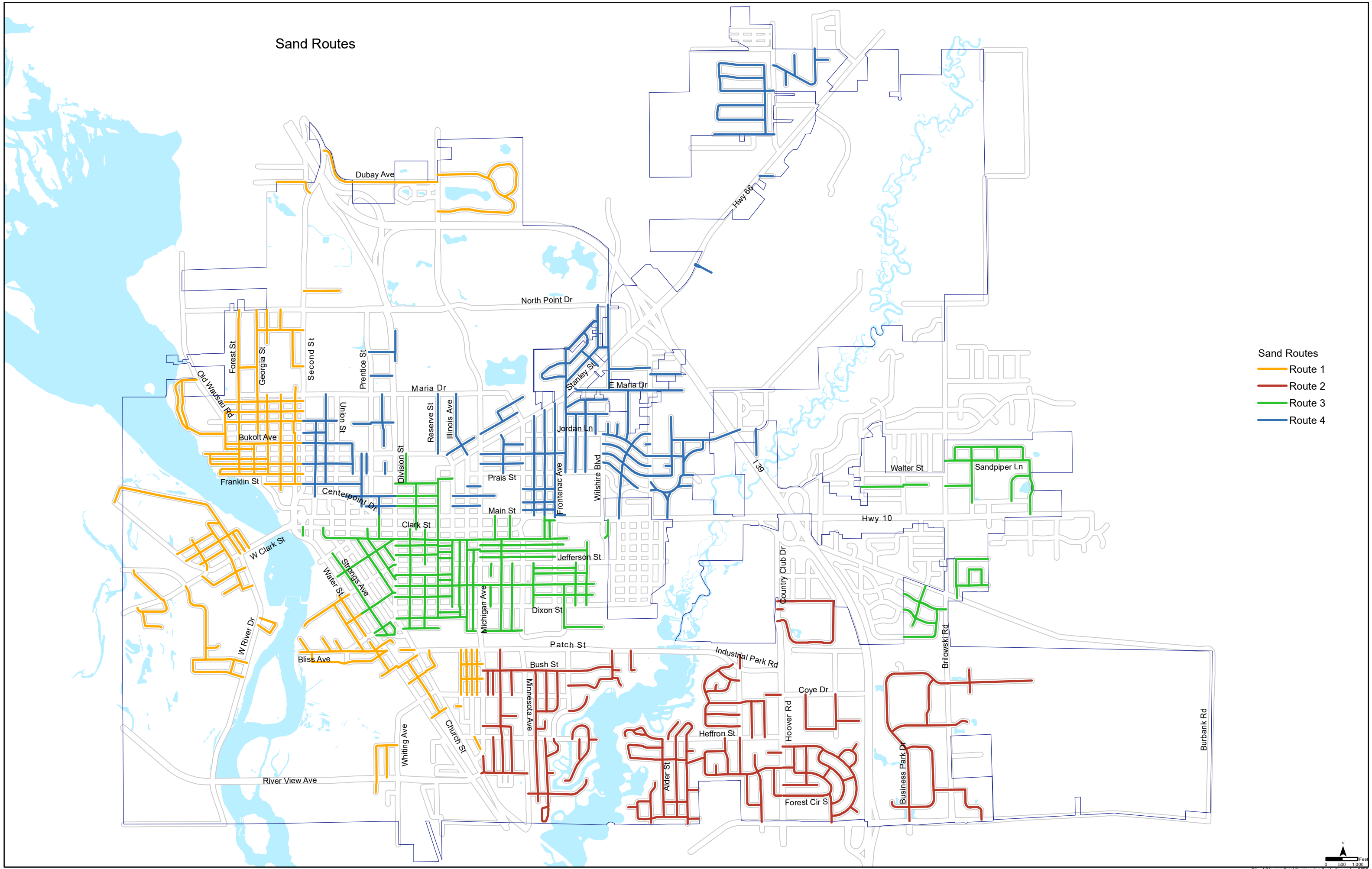
# Plow Routes



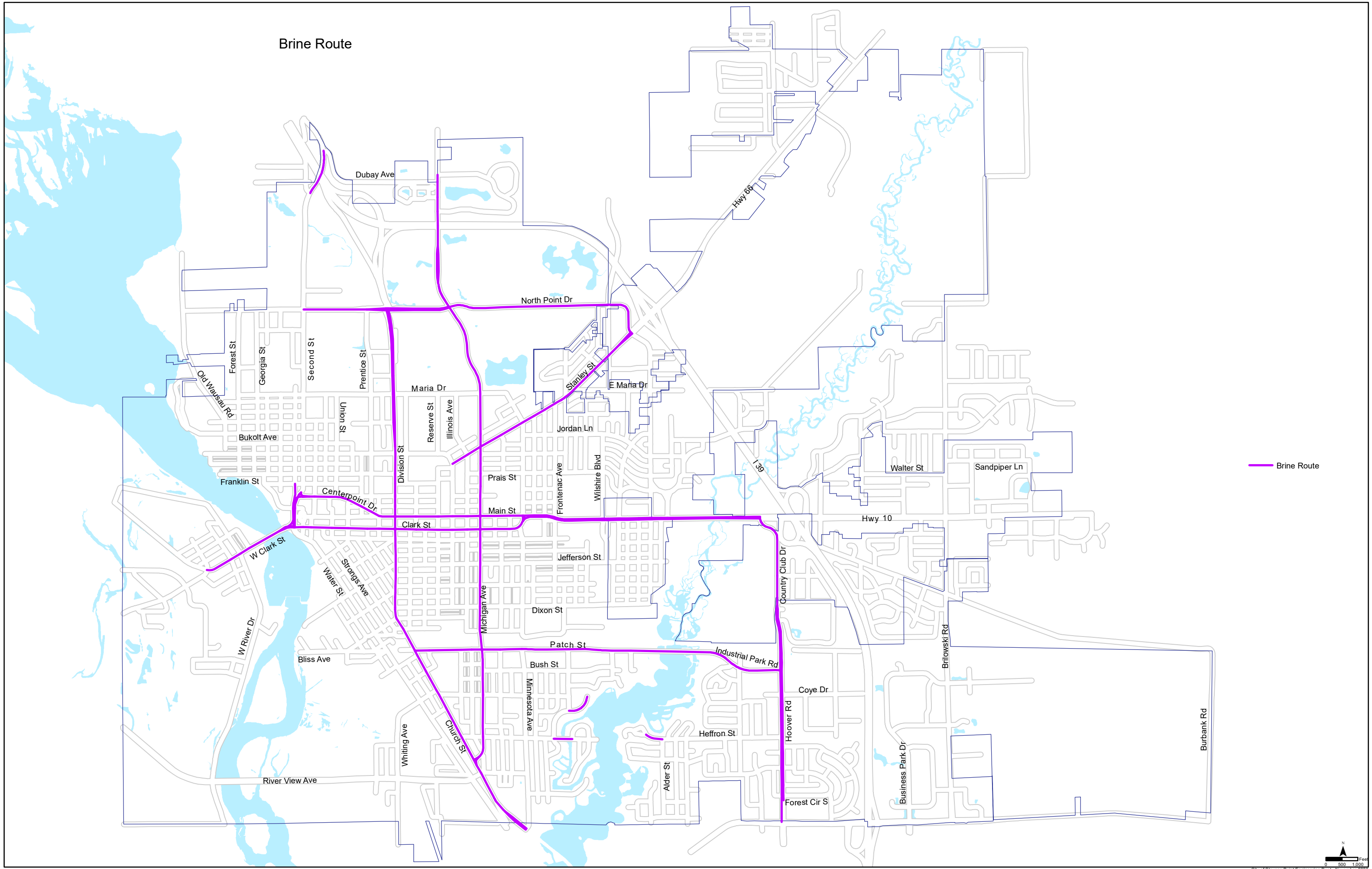
- Plow Routes
- Alley Route
  - Route C1
  - Route C2
  - Route C3
  - Route C4
  - Route C5
  - Route C6
  - Route C7
  - Route C8
  - Route C9
  - Route C10

# Sand Routes

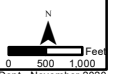
- Sand Routes
- Route 1
  - Route 2
  - Route 3
  - Route 4



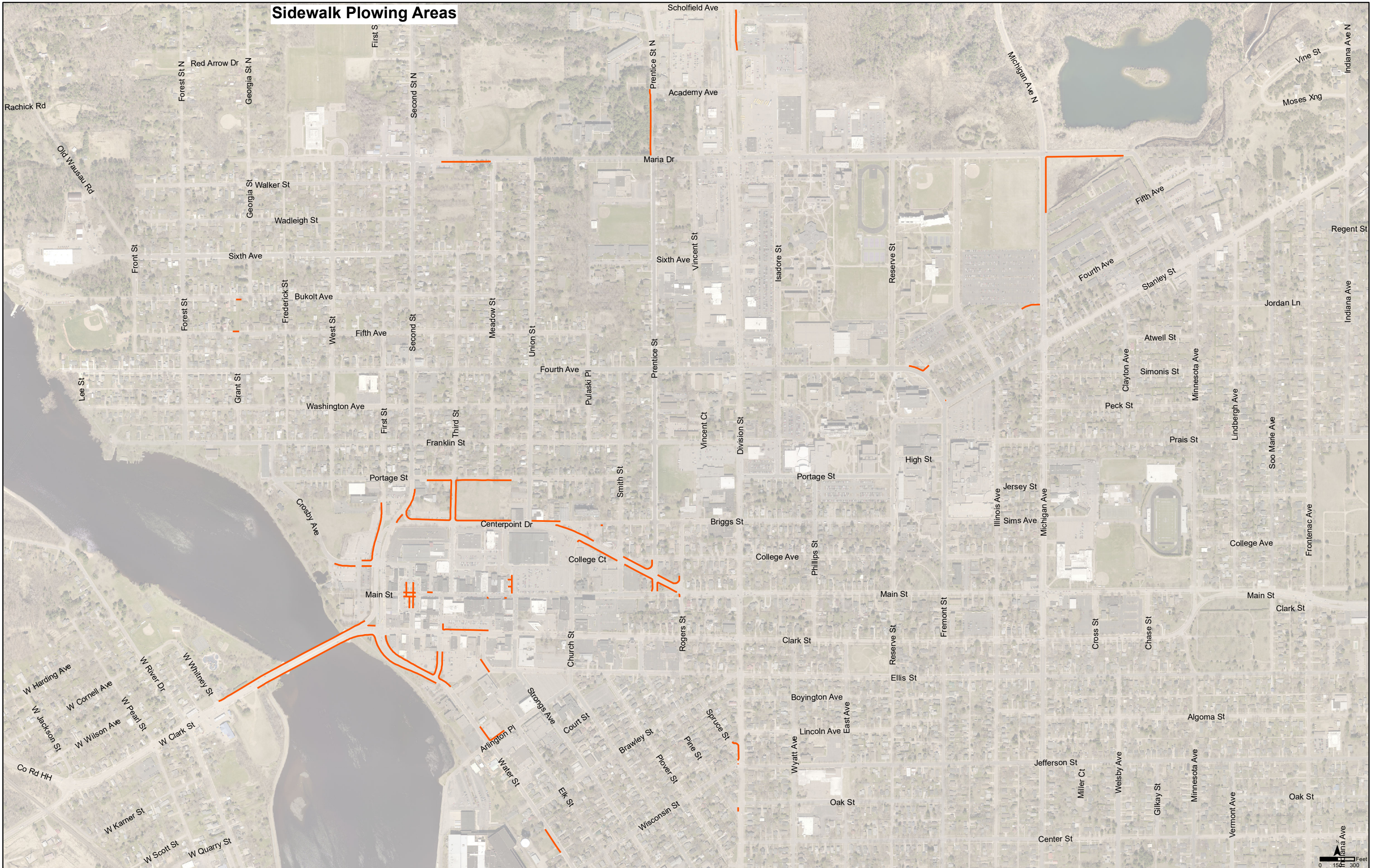
# Brine Route



— Brine Route



# Sidewalk Plowing Areas

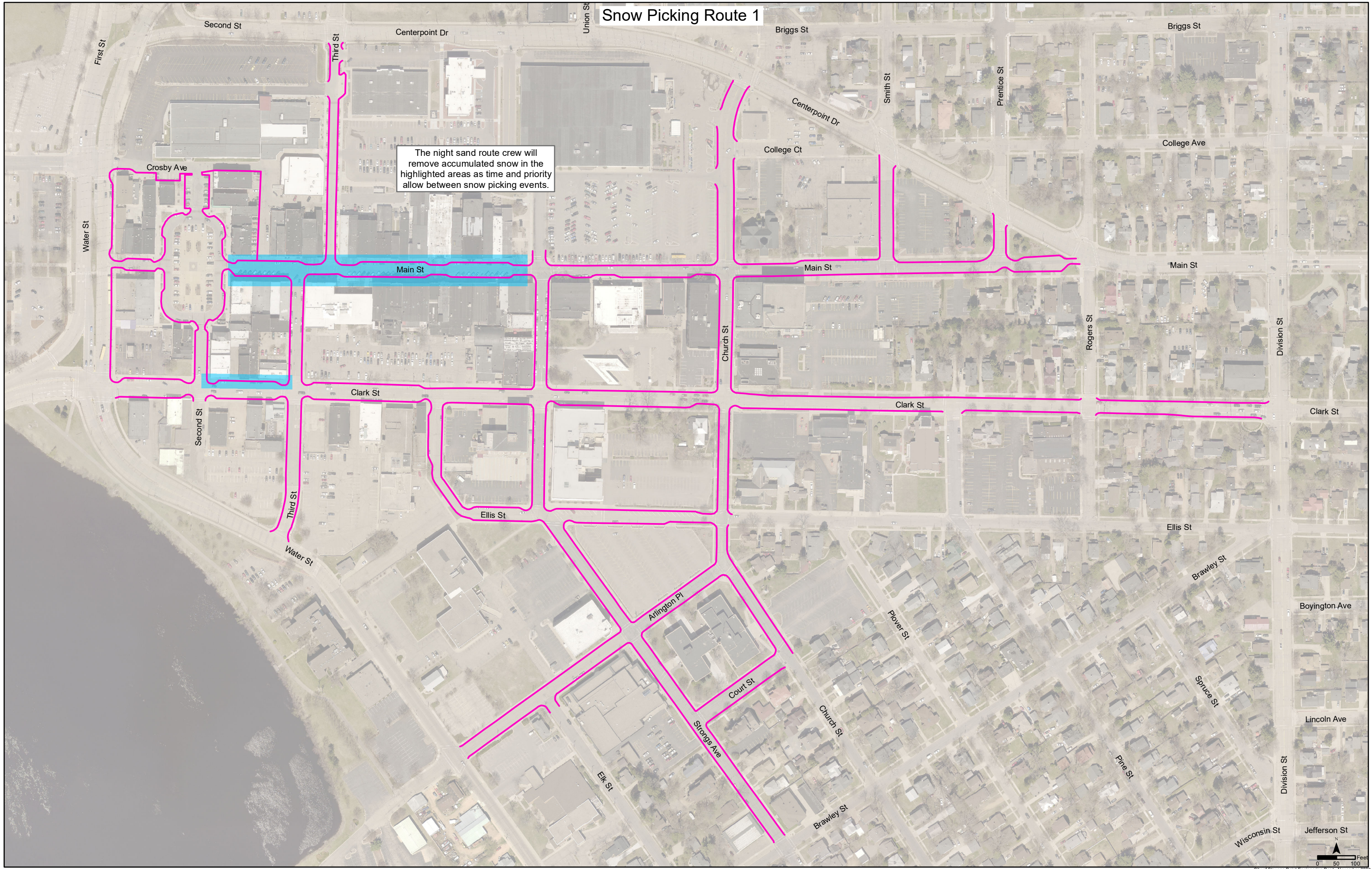


# Sidewalk Plowing Areas

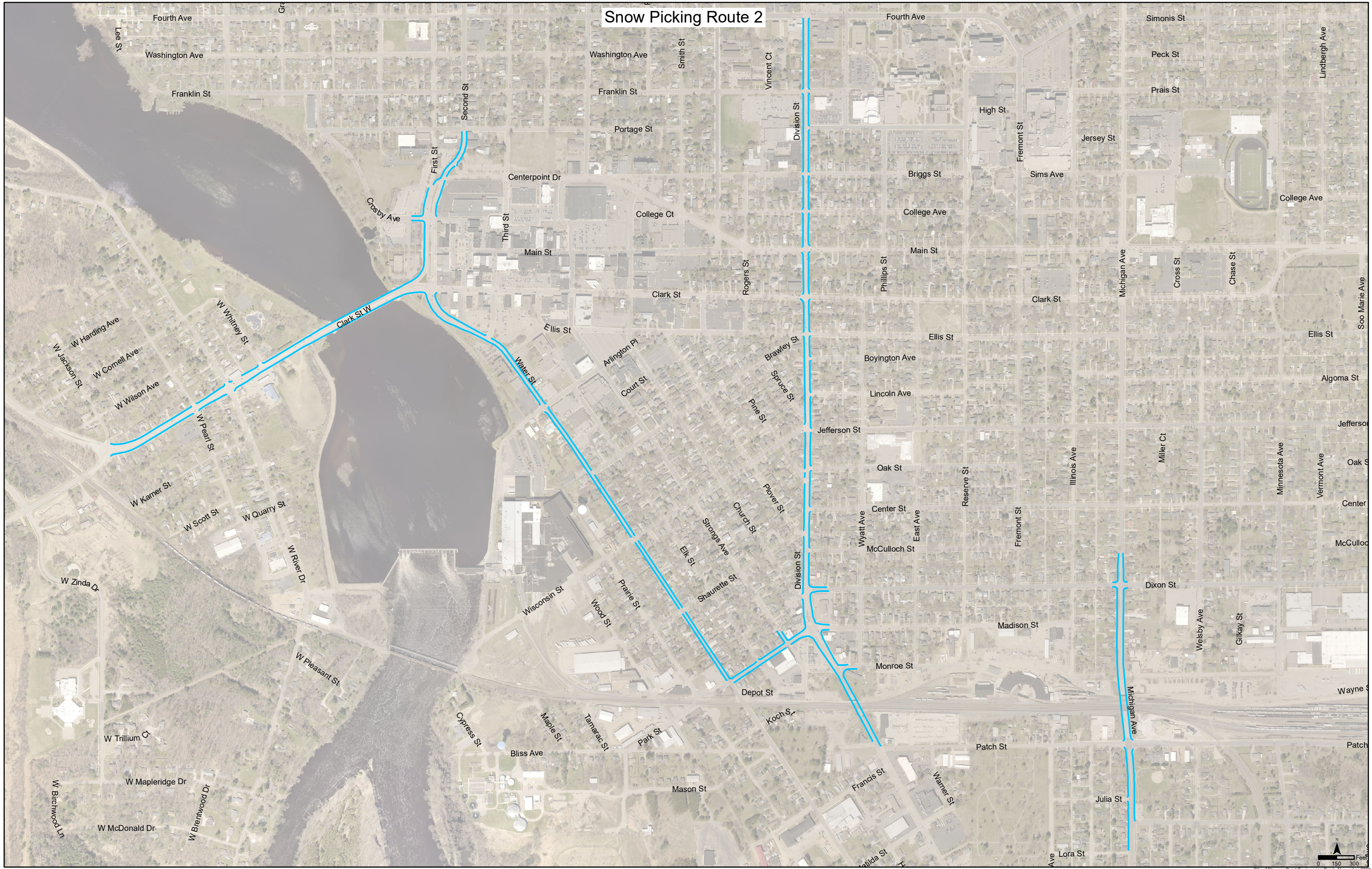


# Snow Picking Route 1

The night sand route crew will remove accumulated snow in the highlighted areas as time and priority allow between snow picking events.



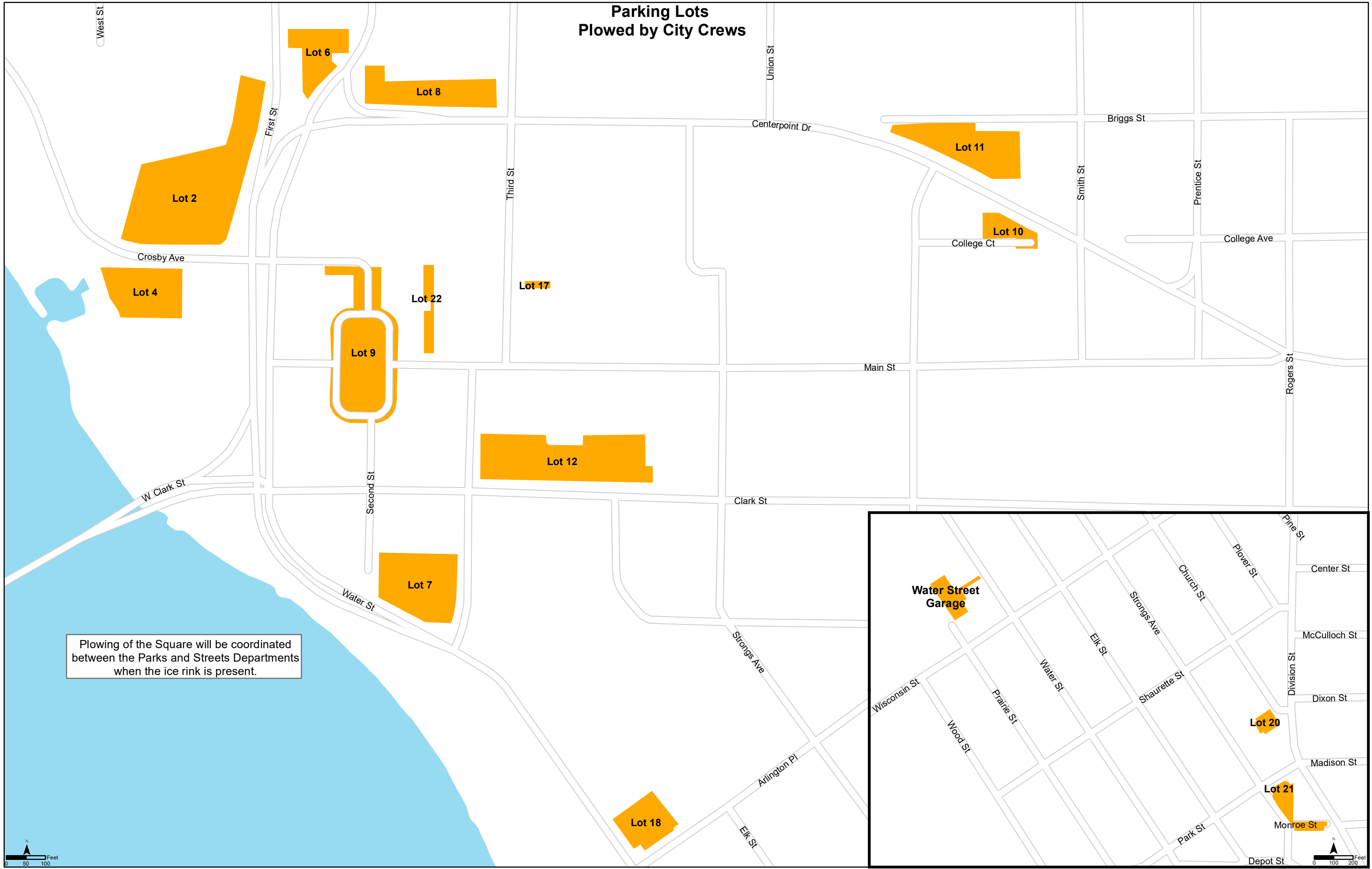
# Snow Picking Route 2







### Parking Lots Plowed by City Crews



Plowing of the Square will be coordinated between the Parks and Streets Departments when the ice rink is present.

